



Fitzgerald Financial Solutions
 Mortgage & Protection Advice
 Mortgage & Mortgage Protection - Life Insurance - Critical Illness Cover
 Income Protection - Buildings, Contents & Landlord Insurance
 Medical Insurance

To arrange a consultation or appointment please contact **Armstrong Gordon**: 028 7083 2000

ARMSTRONG GORDON



ARMSTRONG GORDON
 & Company Limited
 THE PROFESSIONAL PROPERTY AGENT [Est. 1947]

64 The Promenade Portstewart BT55 7AF
 T. 028 7083 2000

F. 028 7083 2950 E. info@armstronggordon.com W. www.armstronggordon.com

Score	Energy rating	Current	Potential
92+	A		
81-91	B		
69-80	C		
55-68	D		
39-54	E	44 E	47 E
21-38	F		
1-20	G		

PORTRUSH

Apt 2, 27 Eglinton Street

BT56 8DX

Offers Over £195,000

Armstrong Gordon & Co. Ltd Estate Agents for themselves and for the vendors and for the lessors of this property whose agents they are given notice that: (1) the particulars are set out as a general outline only for the guidance of intending purchasers or lessees, and do not constitute, nor constitute part of an offer or contract; (2) all descriptions, dimensions, references to condition and necessary permissions for use and occupation and other details are given without responsibility and any intending purchaser or tenants should not rely on them as statements or representations of fact but must satisfy themselves by inspection or otherwise as to the correctness of each of them; (3) no person in the employment of Armstrong Gordon has any authority to give any representation or warranty whatever in relation to this property

028 7083 2000
 www.armstronggordon.com

A delightful two bedroom first floor apartment situated at the rear of 27 Eglinton Street. The property enjoys well proportioned accommodation and benefits from a neutral theme throughout and is in very good condition right through. The property enjoys convenience to Portrush Town Centre, beaches and golf courses. With so many quality attributes on offer, this property can only be truly appreciated by early internal inspection.

The apartment is located in Portrush town centre opposite Curry's Amusements and the Town Hall and is located above and to the rear of the Domino's building.

ACCOMMODATION COMPRISES:

GROUND FLOOR:

Communal Entrance Hall:

With stair access to all floors.

FIRST FLOOR:

Entrance Hall:

6'8 wide with skylight window and storage cupboard.

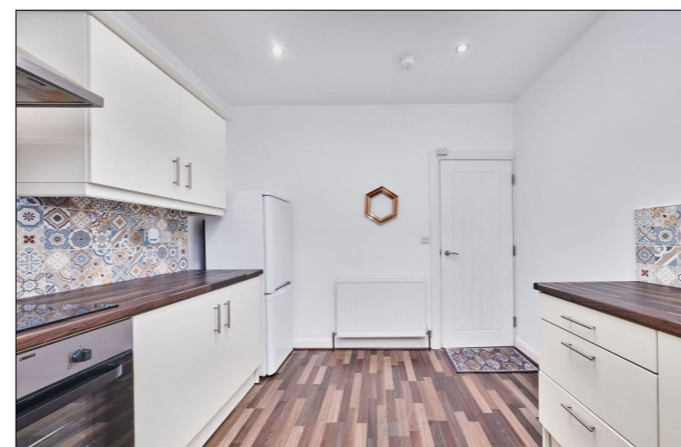
Lounge:

With intercom system. 13'7 x 10'4



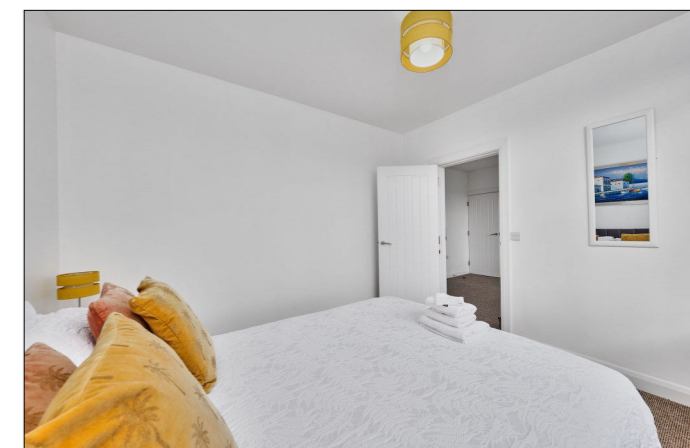
Kitchen:

With single drainer stainless steel sink unit, high and low level units with tiling between, integrated ceramic hob, oven, stainless steel extractor fan above, space for fridge freezer, plumbed for automatic washing machine, saucepan drawers, skylight window, recessed lighting and laminate wood floor. 10'11 x 9'9



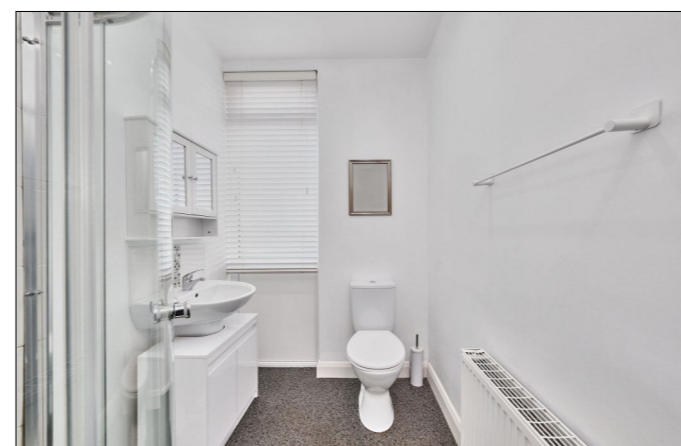
Bedroom 1:

10'11 x 10'7



Bedroom 2:

With built in wardrobe and skylight window.
10'2 x 6'10



Bathroom:

With white suite comprising w.c., wash hand basin with tiled splashback, fully tiled walk in shower cubicle with mains shower, cupboard housing gas boiler, recessed lighting and extractor fan.

SPECIAL FEATURES:

- ** Gas Fired Central Heating
- ** PVC Double Glazed Windows
- ** Excellent Decorative Order
- ** Town Centre Location

TENURE:

Leasehold

CAPITAL VALUE:

£60,000 (Rates: £558.30 p/a approx.)

MANAGEMENT COMPANY:

Please note that all purchasers will become a shareholder in a management company formed to provide building insurance and maintain communal areas. Current service charge is £850.00 per annum. (27.02.24)